

# MONTHLY MEMBERSHIP PROGRESS REPORT

LOCATION REP OF SOUTH AFRICA

District 410 E

Results as of: 7/31/2023

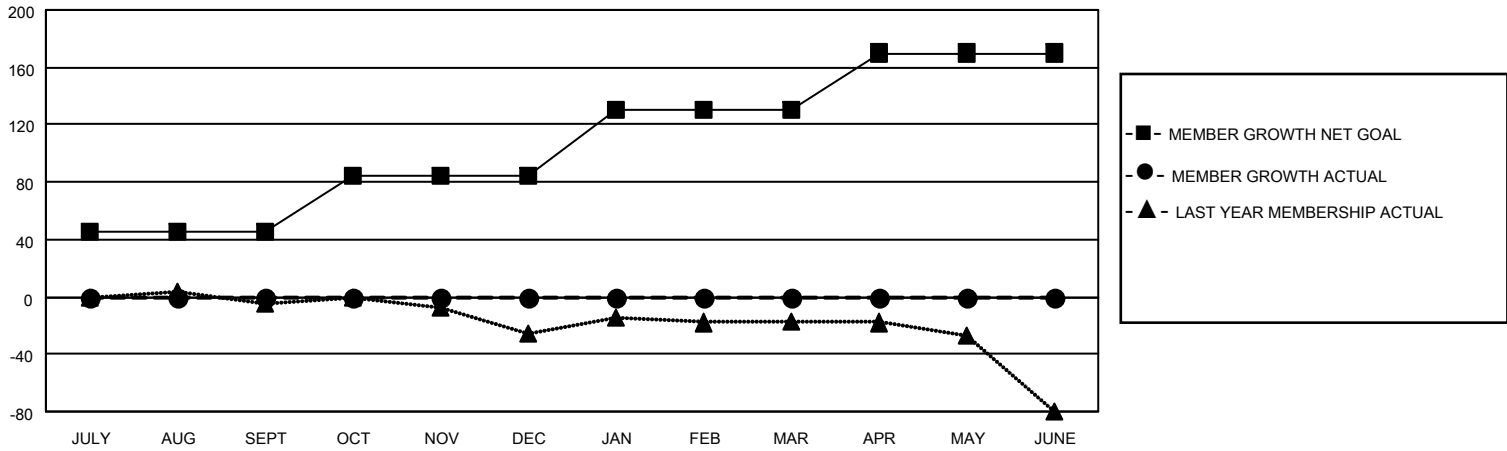
Clubs			
RESULTS FOR 2023-2024			
QUARTER	NEW CLUB GOAL	NEW CLUBS	DROPPED CLUBS
JULY/AUG/SEPT	0	0	0
OCT/NOV/DEC	1	0	0
JAN/FEB/MAR	0	0	0
APR/MAY/JUNE	1	0	0

Members			
RESULTS FOR 2023-2024			
QUARTER	MEMBER GROWTH NET GOAL	MEMBER GROWTH ACTUAL	DROPPED MEMBERS ACTUAL (including transfers)
JULY/AUG/SEPT	45	30	23
OCT/NOV/DEC	40	0	0
JAN/FEB/MAR	45	0	0
APR/MAY/JUNE	40	0	0

**GOALS AND ACTUAL NEW CLUBS CUMULATIVE**



**GOALS AND ACTUAL MEMBERS CUMULATIVE**



**DROPPED CLUBS: 0**

**9 CLUBS OF 66 ADDED 1 OR MORE NEW MEMBERS**

**GENDER DISTRIBUTION**

MALE	463 (49.20%)
FEMALE	478 (50.80%)
NON BINARY	0 (0.00%)
PREFER NOT TO ANSWER	0 (0.00%)

**DROPPED MEMBERS**

[CLICK HERE FOR CUMULATIVE MEMBERSHIP DATA](#)

DECEASED	1
CLUB CANCELLED	0
OTHER	22
<b>TOTAL</b>	<b>23</b>

TOTAL FAMILY UNIT MEMBERS	275
FAMILY MEMBERS PAYING HALF DUES	144